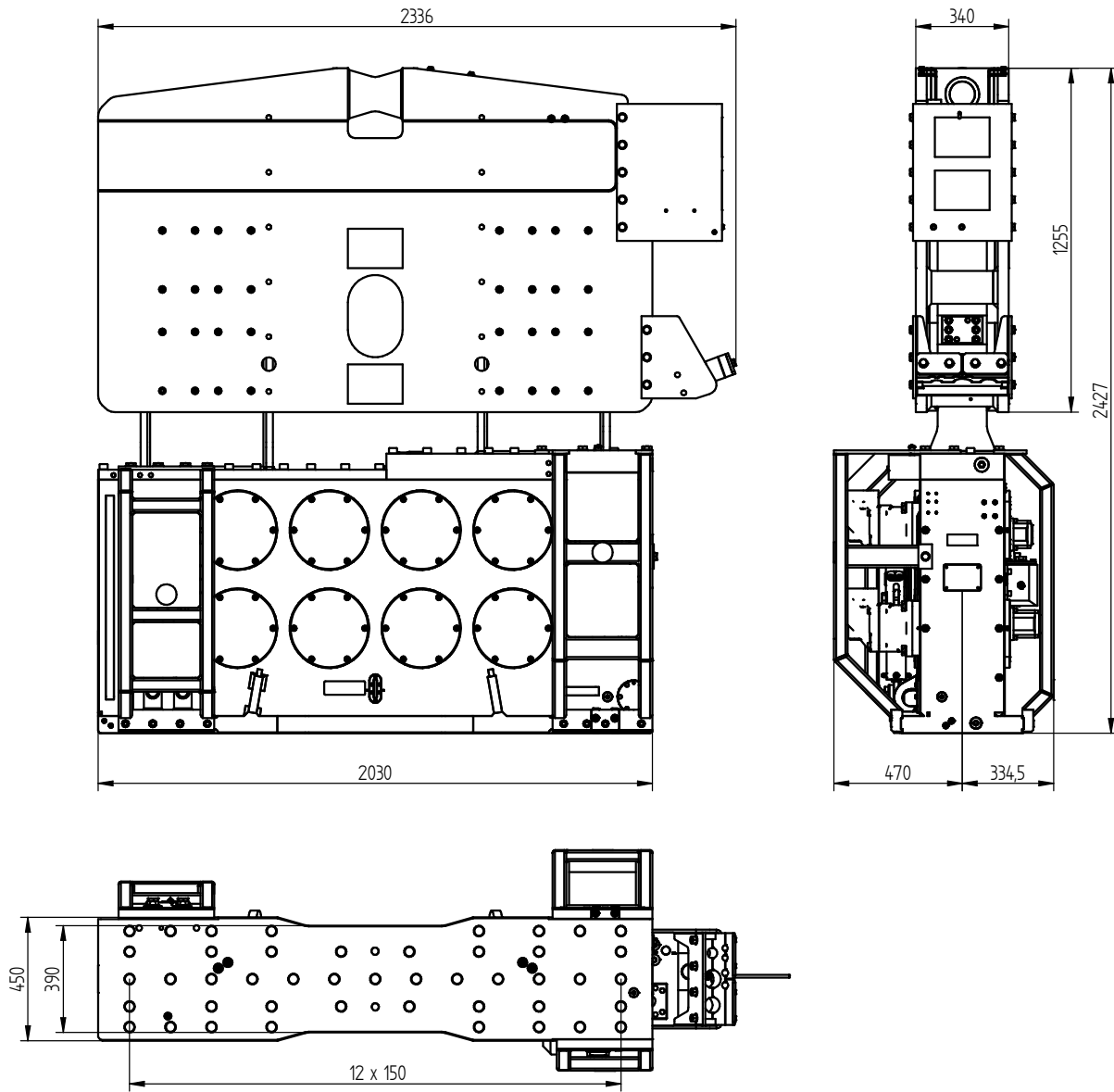




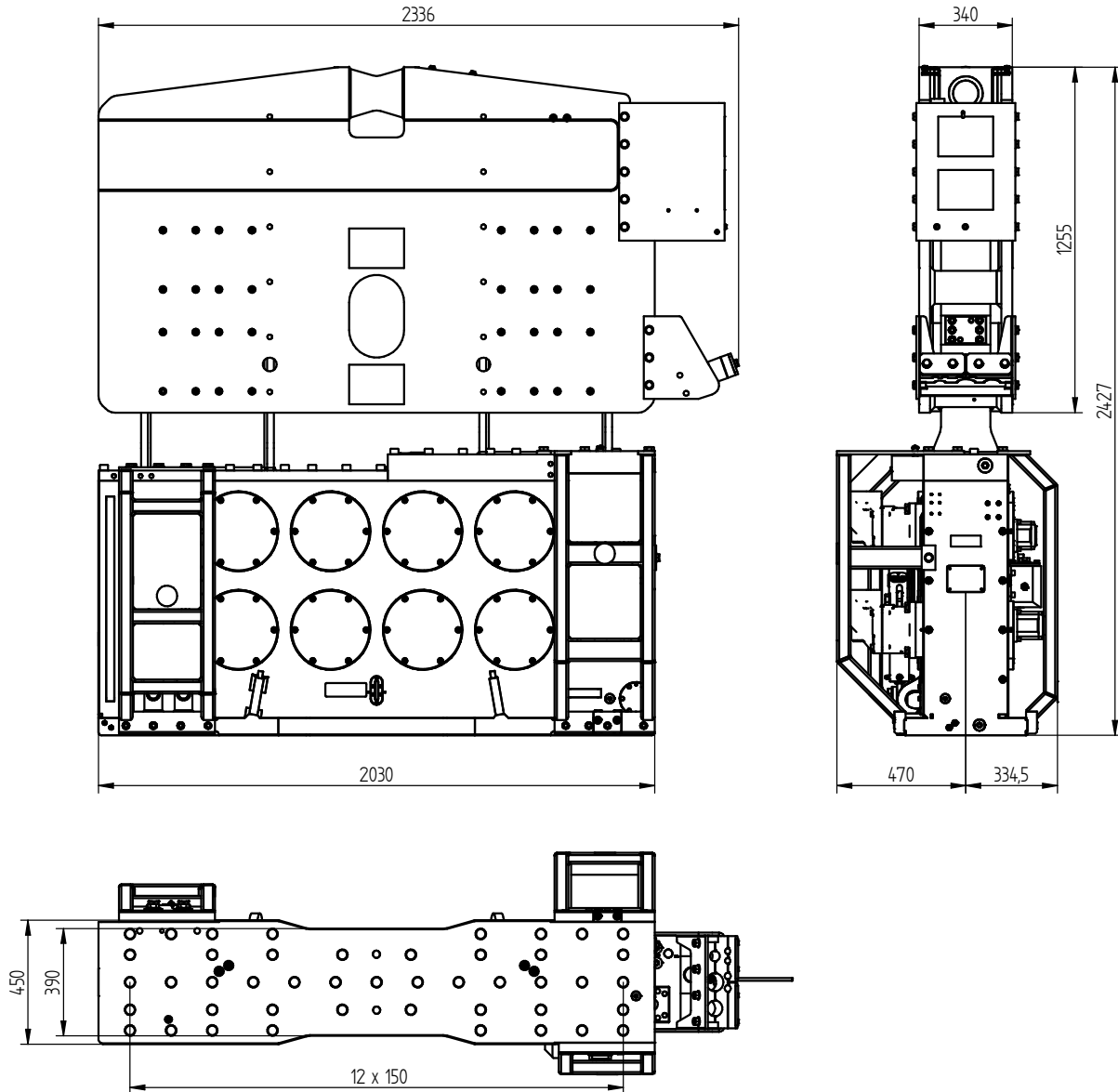
# Specification sheet

## PVE 28VM

Vibro Hammer



| Specifications :                   |               | PVE 28VM                   |            |
|------------------------------------|---------------|----------------------------|------------|
| Eccentric moment                   | 0-28 kgm      | <b>Clamps:</b>             |            |
| Centrifugal force                  | 0-1600 kN     | Sheet pile clamp           | 200TU-P    |
| Max. frequency                     | 2300 rpm      | Transport weight per piece | 2000 kg    |
| Max. amplitude excl. 200TU-P       | 14 mm         | Double clamps              | 100TC      |
| Max. amplitude incl. 200TU-P       | 10,8 mm       | Transport weight per piece | 690 kg     |
| Max. static line-pull              | 400 kN        |                            |            |
| Max. pull-down                     | 150 kN        |                            |            |
| Max. operating pressure            | 350 bar       | <b>Powerpack:</b>          |            |
| Max. oil flow                      | 590 l/min     | Model                      | 600 series |
| Max. hydraulic power               | 344/468 kW/HP |                            |            |
| Forced lubrication                 | yes           |                            |            |
| Dynamic weight excl. 200TU-P       | 3500 kg       | <b>Hose set:</b>           |            |
| Dynamic weight incl. 200TU-P       | 5500 kg       | Length                     | 45 m       |
| Total weight excl. 200TU-P & hoses | 5900 kg       | Transport weight (±)       | 1121 kg    |



#### Technische Daten :

#### PVE 28VM

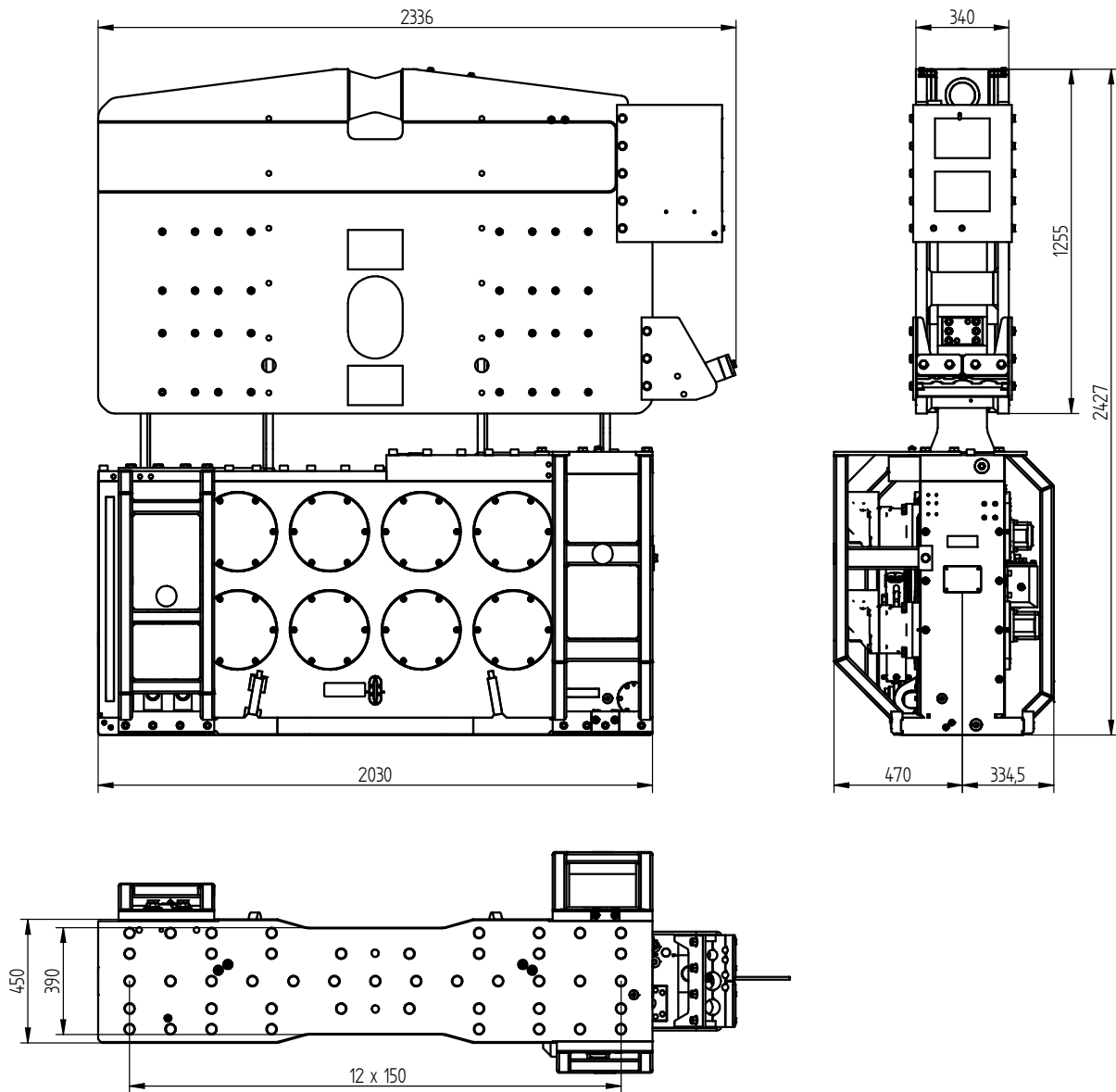
|                                     |               |                         |            |
|-------------------------------------|---------------|-------------------------|------------|
| Statisches Moment                   | 0-28 kgm      | <b>Klemmzange:</b>      |            |
| Max. Fliehkraft                     | 0-1600 kN     | Universalzange          | 200TU-P    |
| Max. Drehzahl                       | 2300 rpm      | Transportgew. pro Stück | 2000 kg    |
| Max. Amplitude ohne 200TU-P         | 14 mm         | Rohrklemmzange          | 100TC      |
| Max. Amplitude mit 200TU-P          | 10,8 mm       | Transportgew. pro Stück | 690 kg     |
| Max. Statische Zugkraft             | 400 kN        |                         |            |
| Max. Vorspannung                    | 150 kN        |                         |            |
| Max. Betriebsdruck                  | 350 bar       | <b>Aggregat:</b>        |            |
| Max. Fördermenge                    | 590 l/min     | Modell                  | 600 series |
| Max. hydraulische Leistung          | 344/468 kW/PS |                         |            |
| Zwangsschmierung                    | ja            |                         |            |
| Dyn. Gewicht ohne 200TU-P           | 3500 kg       | <b>Schlauchsatz:</b>    |            |
| Dyn. Gewicht mit 200TU-P            | 5500 kg       | Länge                   | 45 m       |
| Gesamtgew. Ohne 200TU-P & Schläuche | 5900 kg       | Transportgewicht (±)    | 1121 kg    |



# Spécifications

## PVE 28VM

Vibro Hammer



### Spécifications

### PVE 28VM

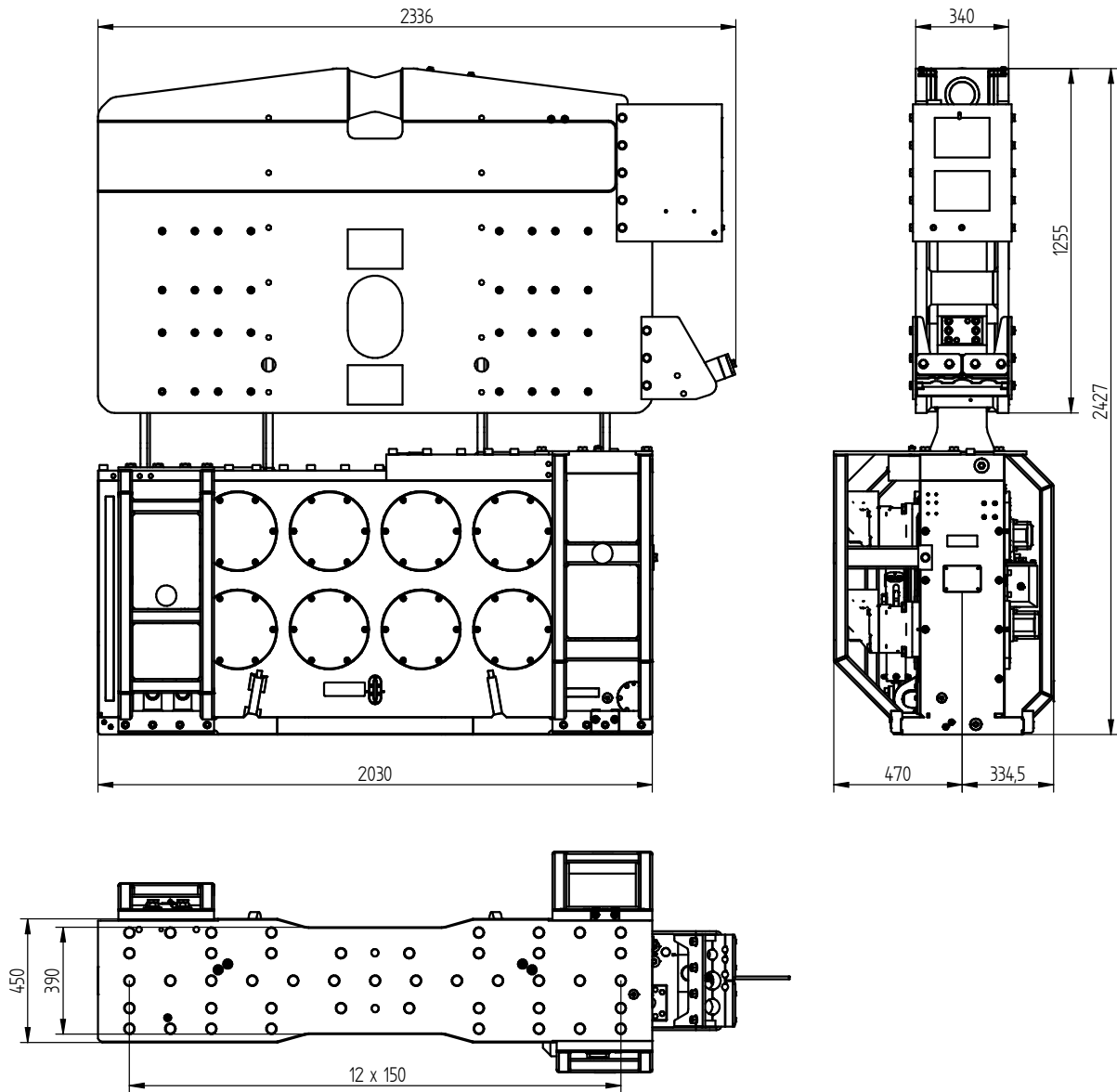
|                                 |               |                              |            |
|---------------------------------|---------------|------------------------------|------------|
| Moment excentrique              | 0-28 kgm      | <b>Pincés:</b>               |            |
| Max. force centrifuge           | 0-1600 kN     | Pince palplanche             | 200TU-P    |
| Max. fréquence                  | 2300 rpm      | Poids de transport par pièce | 2000 kg    |
| Max. amplitude sans 200TU-P     | 14 mm         | Pince tube                   | 100TC      |
| Max. amplitude avec 200TU-P     | 10,8 mm       | Poids de transport par pièce | 690 kg     |
| Force de traction statique      | 400 kN        |                              |            |
| Force maximale d'appui          | 150 kN        |                              |            |
| Pression de travail max.        | 350 bar       | <b>Groupe hydraulique:</b>   |            |
| Débit d'huile max.              | 590 l/min     | Modèle                       | 600 series |
| Puissance hydraulique max.      | 344/468 kW/ch |                              |            |
| Huile lubrifiante               | oui           |                              |            |
| Poids dynamique sans 200TU-P    | 3500 kg       | <b>Jeu de tuyau:</b>         |            |
| Poids dynamique avec 200TU-P    | 5500 kg       | Longueur                     | 45 m       |
| Poids total sans 200TU & tuyaux | 5900 kg       | Poids de transport (±)       | 1121 kg    |



# Specificaties

## PVE 28VM

Vibro Hammer



### Specificaties

### PVE 28VM

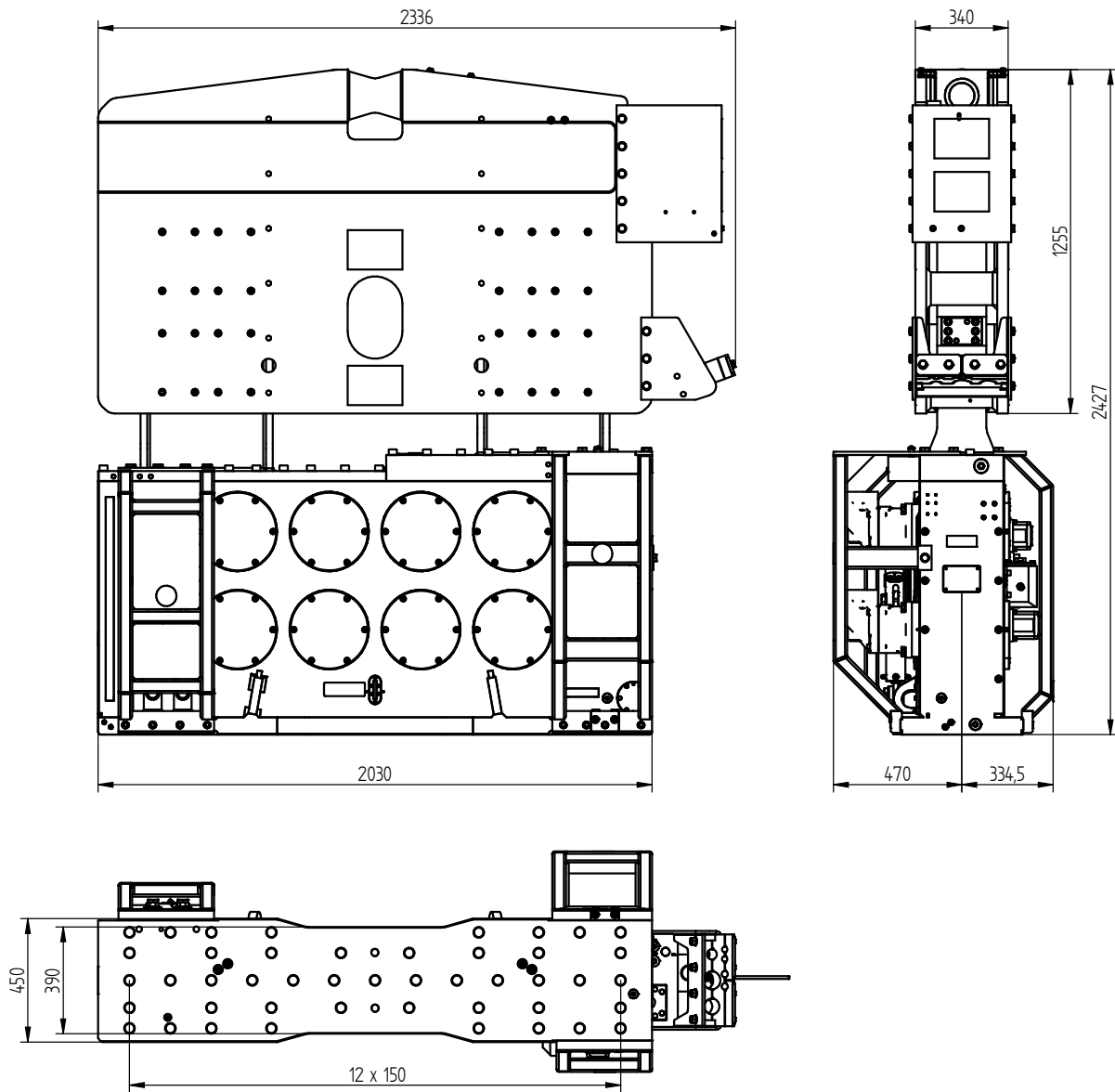
|                                       |               |                           |            |
|---------------------------------------|---------------|---------------------------|------------|
| Excentrisch moment                    | 0-28 kgm      | <b>Klemmen:</b>           |            |
| Max. centrifugaalkracht               | 0-1600 kN     | Damwandklem               | 200TU-P    |
| Max. toerental                        | 2300 rpm      | Transportgewicht per klem | 2000 kg    |
| Max. amplitude excl. 200TU-P          | 14 mm         | Pijpenklem                | 100TC      |
| Max. amplitude incl. 200TU-P          | 10,8 mm       | Transportgewicht per klem | 690 kg     |
| Max. statische trekkracht             | 400 kN        |                           |            |
| Max. voorspanning                     | 150 kN        |                           |            |
| Max. werkdruk                         | 350 bar       | <b>Aggregaat:</b>         |            |
| Max. oliedoorstroming                 | 590 l/min     | Model                     | 600 series |
| Max. hydraulisch vermogen             | 344/468 kW/PK |                           |            |
| Geforceerde smering                   | ja            |                           |            |
| Dynamisch gewicht excl. 200TU-P       | 3500 kg       | <b>Slangenset:</b>        |            |
| Dynamisch gewicht incl. 200TU-P       | 5500 kg       | Lengte                    | 45 m       |
| Totaalgewicht excl. 200TU-P & slangen | 5900 kg       | Transportgewicht (±)      | 1121 kg    |



# Especificaciones

## PVE 28VM

Vibro Hammer



### Especificaciones

### PVE 28VM

|   |               |                              |            |
|---|---------------|------------------------------|------------|
| Momento excéntrico                        | 0-28 kgm      | <b>Abrazadera:</b>           |            |
| Fuerza centrífuga máxima                  | 0-1600 kN     | Hoja abrazadera pila         | 200TU-P    |
| Frecuencia máxima                         | 2300 rpm      | Peso de transporte por pieza | 2000 kg    |
| Amplitud máxima excluyendo 200TU-P        | 14 mm         | Abrazadera de tubo           | 100TC      |
| Amplitud máxima incluyendo 200TU-P        | 10,8 mm       | Peso de transporte por pieza | 690 kg     |
| Estático tracción máxima                  | 400 kN        |                              |            |
| Compresión máxima                         | 150 kN        |                              |            |
| Presión máxima de trabajo                 | 350 bar       | <b>Unidad de potencia:</b>   |            |
| Flujo de aceite máximo                    | 590 l/min     | Modelo                       | 600 series |
| Máxima potencia hidráulica                | 344/468 kW/HP |                              |            |
| Lubricación forzada                       | si            |                              |            |
| Peso dinámico excluyendo 200TU-P          | 3500 kg       | <b>Conjunto de manguera:</b> |            |
| Peso dinámico incluyendo 200TU-P          | 5500 kg       | Longitud                     | 45 m       |
| Peso total excluyendo 200TU-P & mangueras | 5900 kg       | Peso de transporte (±)       | 1121 kg    |



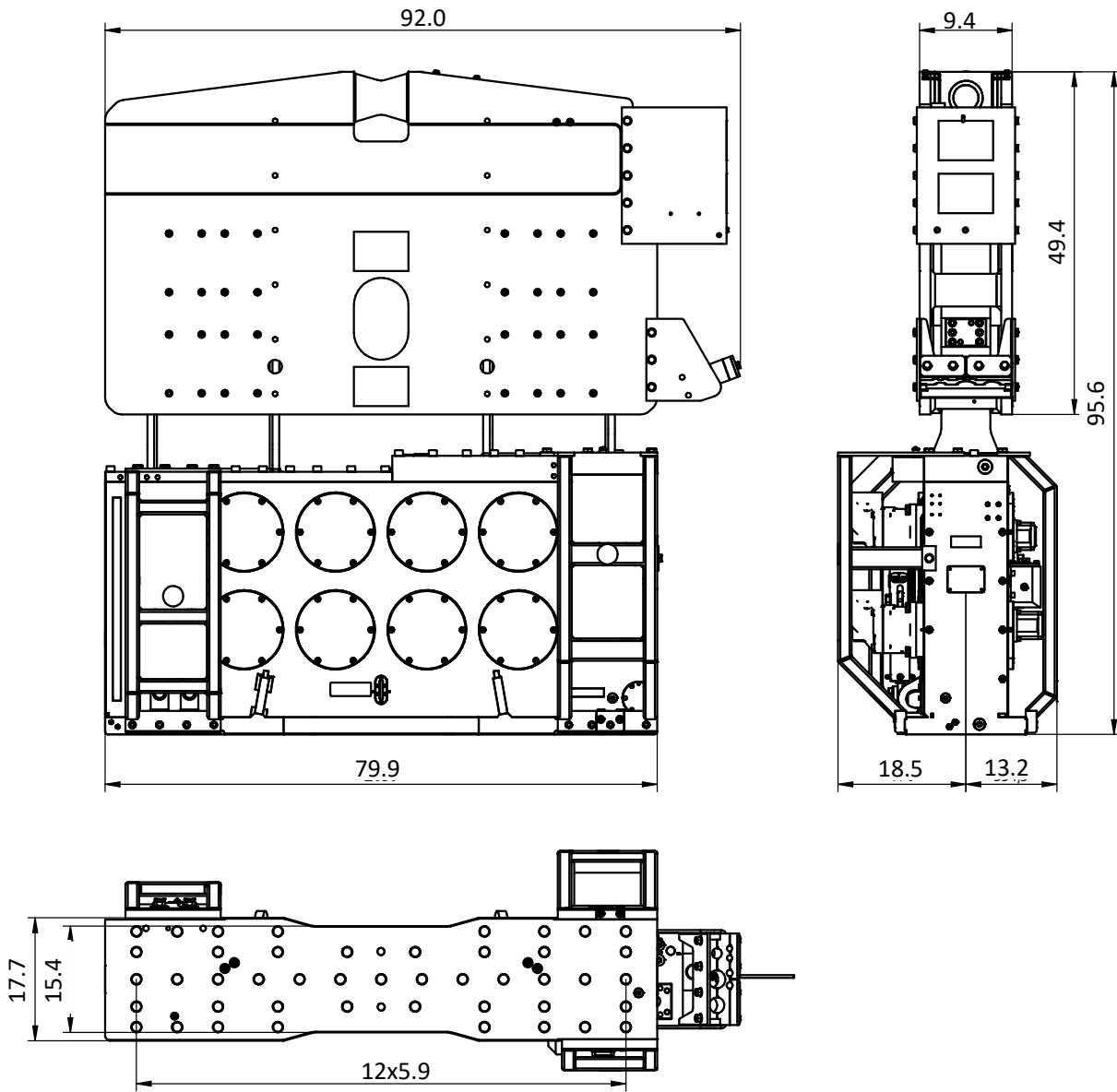
# Specifications

## PVE 28VM

### Vibro Hammer

USA

Dimensions in inches



| Specifications                         |                | PVE 28VM                   |            |
|--|----------------|----------------------------|------------|
| Eccentric moment                       | 0-2,431 in-lbs | <b>Clamps:</b>             |            |
| Centrifugal force                      | 0-180 ton      | Sheet pile clamp           | 200TU-P    |
| Max. frequency                         | 2,300 rpm      | Transport weight per piece | 4,409 lbs  |
| Max. amplitude excluding 200TU-P       | 0.55 in        | Double clamps              | 100TC      |
| Max. amplitude including 200TU-P       | 0.43 in        | Transport weight per piece | 1,521 lbs  |
| Max. static line-pull                  | 45 ton         |                            |            |
| Max. pull-down                         | 17 ton         |                            |            |
| Max. operating pressure                | 5,076 psi      | <b>Powerpack:</b>          |            |
| Max. oil flow                          | 156 gal/min    | Model                      | 600 series |
| Max. hydraulic power                   | 344/468 kW/HP  |                            |            |
| Forced lubrication                     | yes            |                            |            |
| Dynamic weight excluding 200TU-P       | 7,716 lbs      | <b>Hose set:</b>           |            |
| Dynamic weight including 200TU-P       | 12,125 lbs     | Length                     | 148 ft     |
| Total weight excluding 200TU-P & hoses | 13,007 lbs     | Transport weight (±)       | 2471 lbs   |

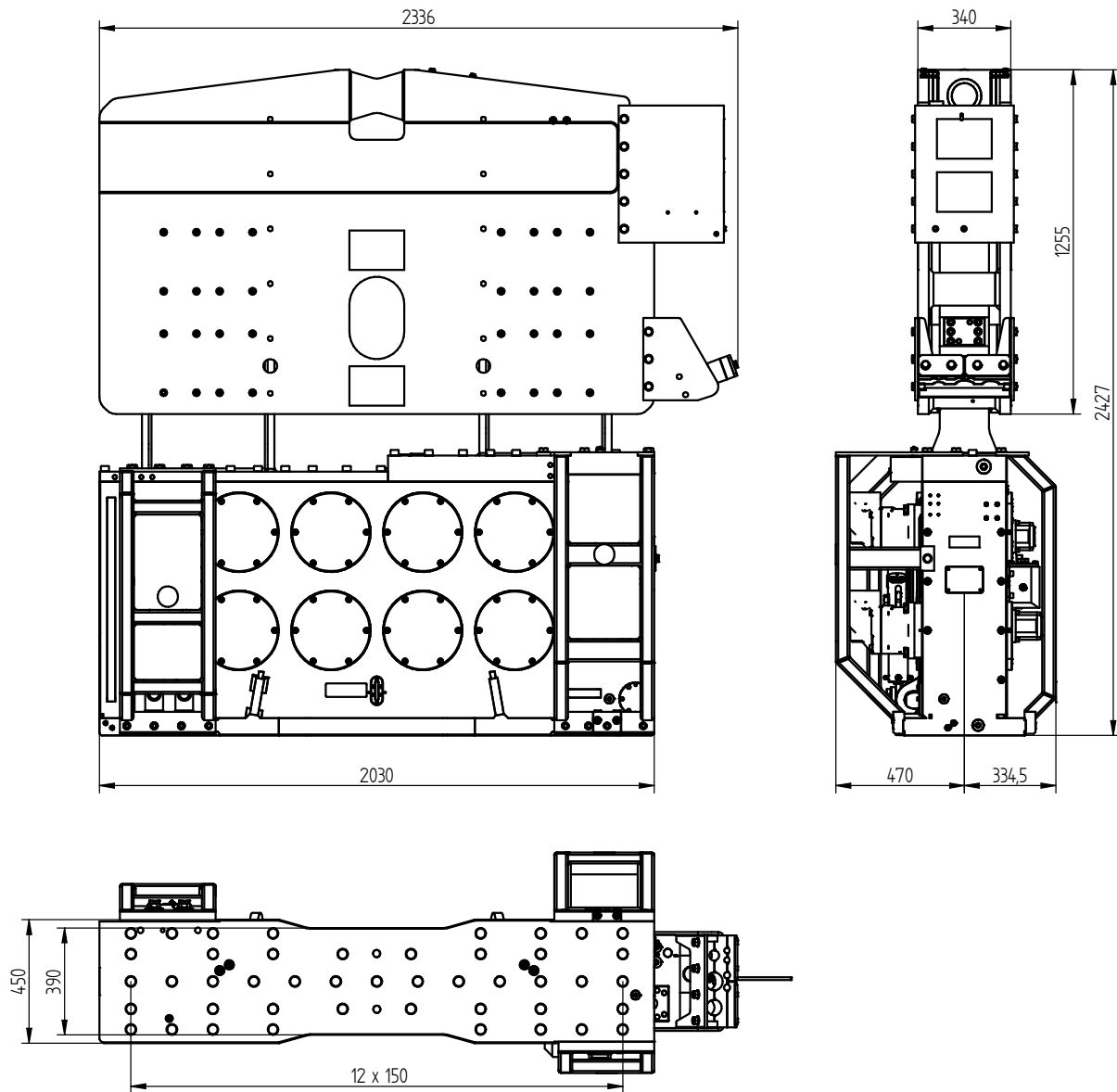


## Specificatii

## PVE 28VM

Ciocan cu vibratii

românesc



## Specificatii :

## PVE 28VM

|  |               |                            |            |
|--|---------------|----------------------------|------------|
| Moment excentric                         | 0-28 kgm      | <b>menghira:</b>           |            |
| Forta centrifuga maxima                  | 0-1600 kN     | menghina pentru palplanse  | 200TU-P    |
| Frecventa maxima                         | 2300 rpm      | Greutatea de transport pp. | 2000 kg    |
| Amplitudine maxima exclusiva. 200TU-P    | 14 mm         | menghina dubla             | 100TC      |
| Amplitudine maxima inclusivă. 200TU-P    | 10,8 mm       | Greutatea de transport pp. | 690 kg     |
| Tractiune maxima statica                 | 400 kN        |                            |            |
| Trage în jos maxima                      | 150 kN        |                            |            |
| Presiune maxima de lucru                 | 350 bar       | <b>generatoare:</b>        |            |
| Debit maxim de ulei                      | 590 l/min     | Model                      | 600 series |
| Puterea hidraulică maxima                | 344/468 kW/HP |                            |            |
| Lubrifiere fortata                       | da            |                            |            |
| Greutatea dinamica exclusiva. 200TU-P    | 3500 kg       | <b>Tip de furtun:</b>      |            |
| Greutatea dinamica inclusivă. 200TU-P    | 5500 kg       | Lungimea                   | 45 m       |
| Greutatea totala fara. 200TU-P si furtun | 5900 kg       | Greutatea de transport (±) | 1121 kg    |