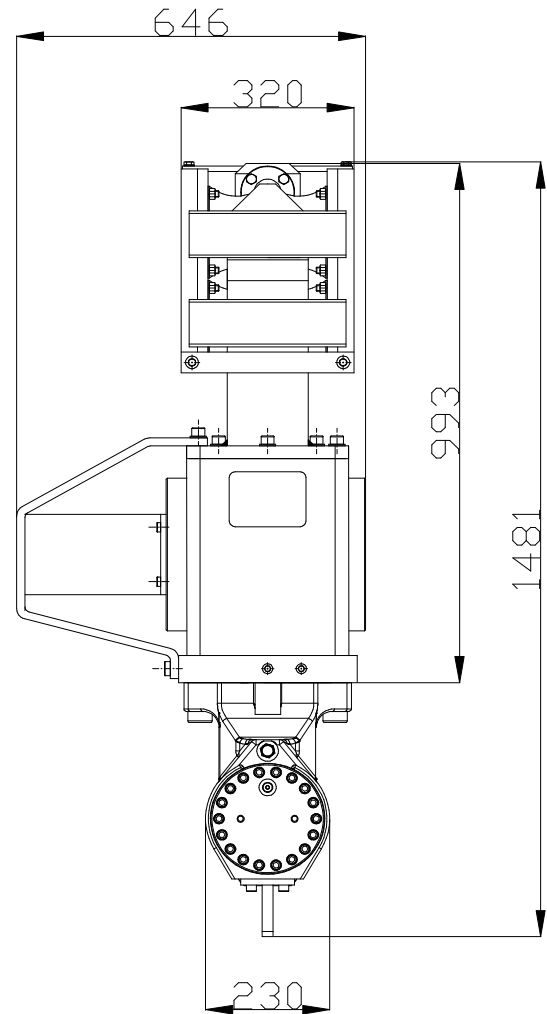
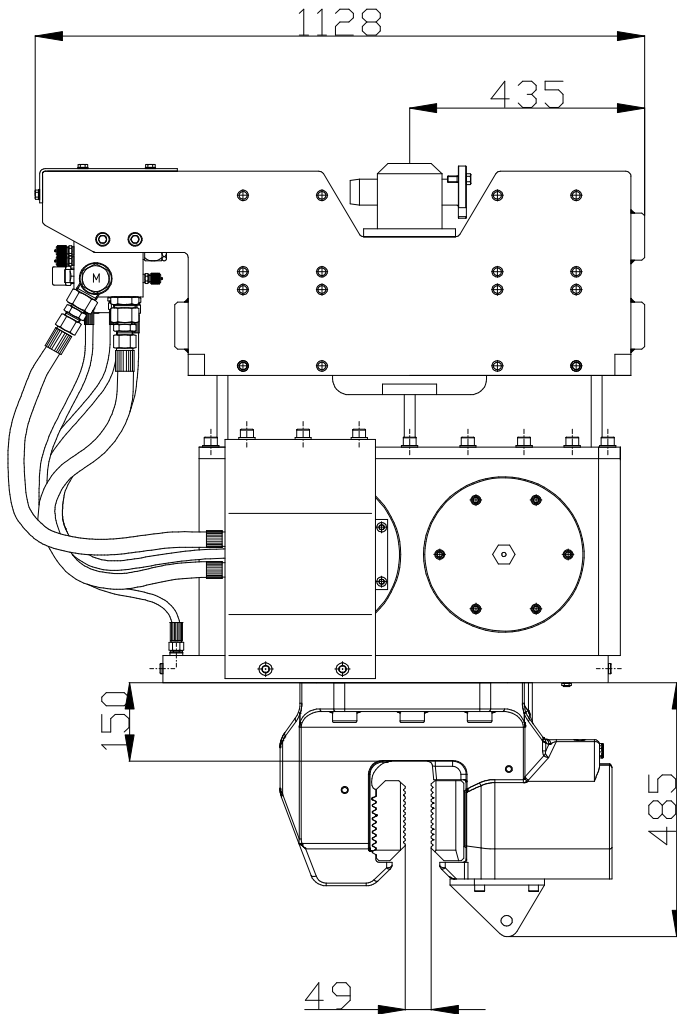




Specification sheet

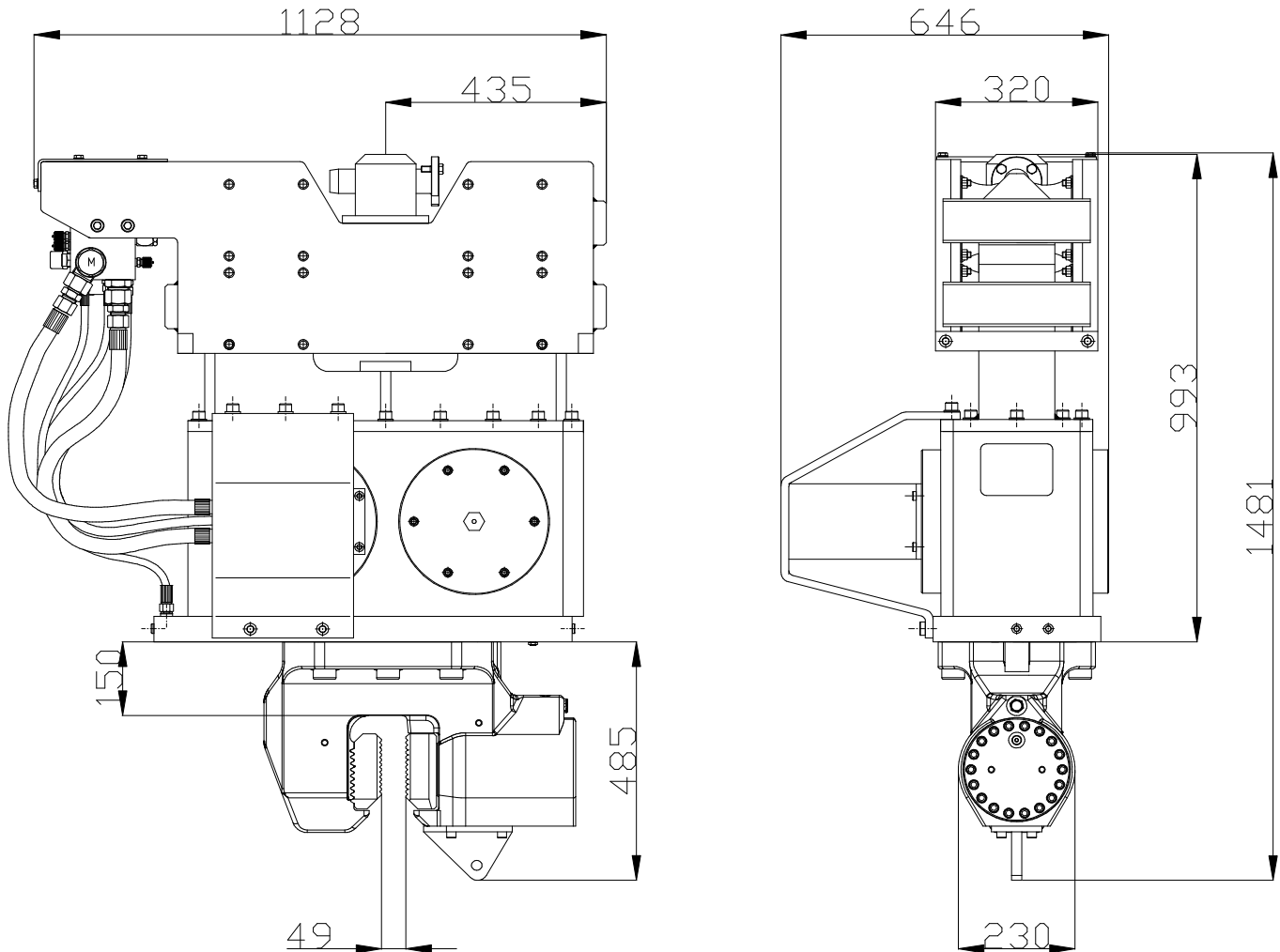
PVE 4A

Vibro Hammer



Max. oil flow will differ in case of a manifold with sequence function. Contact Dieseko Group for more information.

Specifications :		PVE 4A	
Eccentric moment	4 kgm	Clamps:	
Centrifugal force	344 kN	Sheet pile clamp	60TU
Max. frequency	2800 rpm	Transport weight per piece	250 kg
Max. amplitude excl. 60TU	12,3 mm	Double clamps	N/A
Max. amplitude incl. 60TU	8,9 mm	Transport weight per piece	N/A kg
Max. static line-pull	120 kN		
Max. pull-down	100 kN		
Max. operating pressure	350 bar	Powerpack:	
Max. oil flow	168 l/min	Model	N/A
Max. hydraulic power	98/133 kW/HP		
Forced lubrication	no		
Dynamic weight excl. 60TU	650 kg	Hose set:	
Dynamic weight incl. 60TU	900 kg	Length	N/A m
Total weight excl. 60TU & hoses	1280 kg	Transport weight (±)	N/A kg



Bei einem Manifold mit Sequenzfunktion ist der maximale Fördermenge unterschiedlich. Kontaktieren Sie Dieseko Group für weitere Informationen.

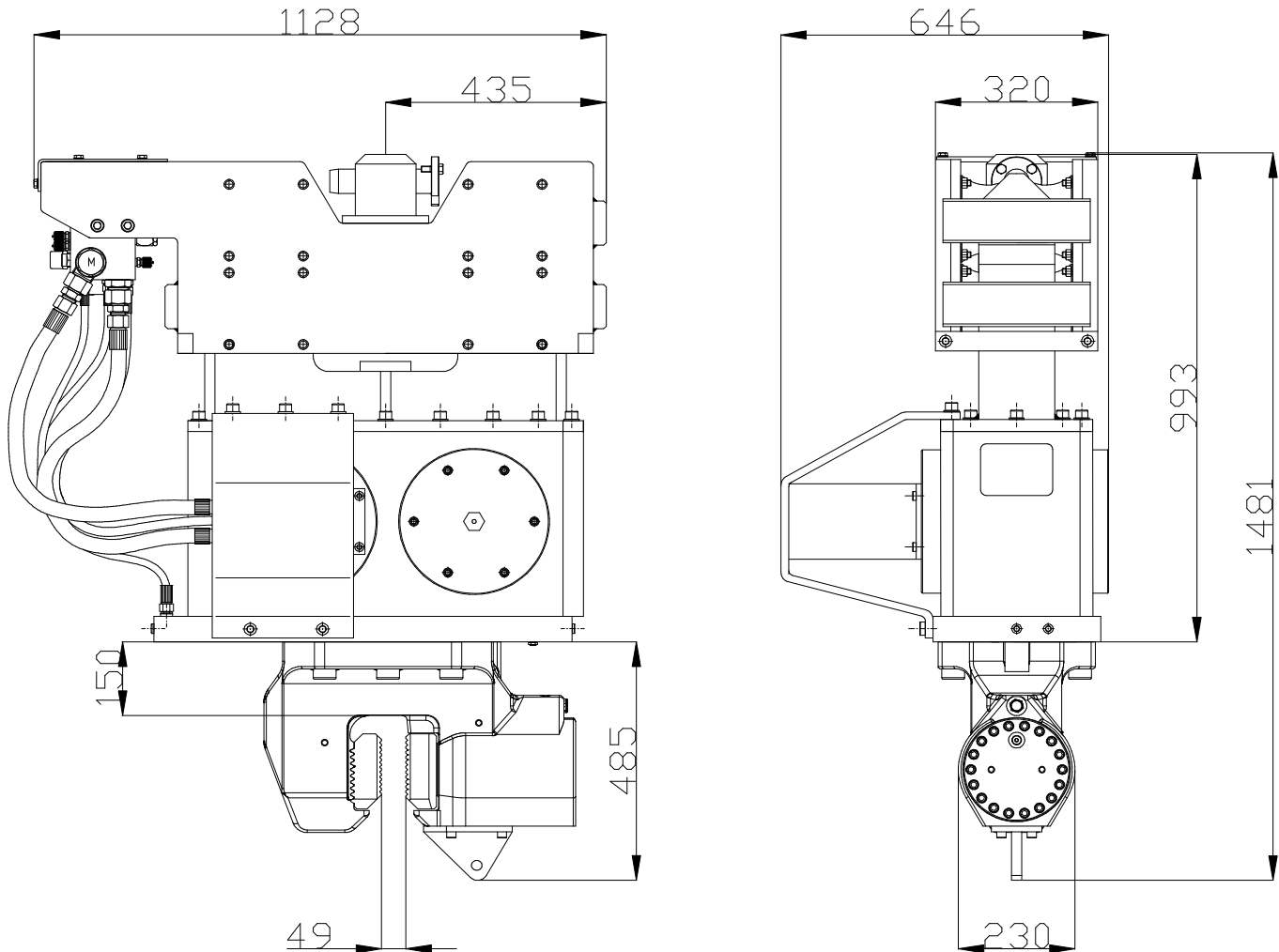
Technische Daten :		PVE 4A	
Statisches Moment	4 kgm	Klemmzange:	
Max. Fliehkraft	344 kN	Universalzange	60TU
Max. Drehzahl	2800 rpm	Transportgew. pro Stück	250 kg
Max. Amplitude ohne 60TU	12,3 mm	Rohrklemmzange	N/A
Max. Amplitude mit 60TU	8,9 mm	Transportgew. pro Stück	N/A kg
Max. Statische Zugkraft	120 kN		
Max. Vorspannung	100 kN		
Max. Betriebsdruck	350 bar	Aggregat:	
Max. Fördermenge	168 l/min	Modell	N/A
Max. hydraulische Leistung	98/133 kW/PS		
Zwangsschmierung	nein		
Dyn. Gewicht ohne 60TU	650 kg	Schlauchsatz:	
Dyn. Gewicht mit 60TU	900 kg	Länge	N/A m
Gesamtgew. ohne 60TU & Schläuche	1280 kg	Transportgewicht (±)	N/A kg



Spécifications

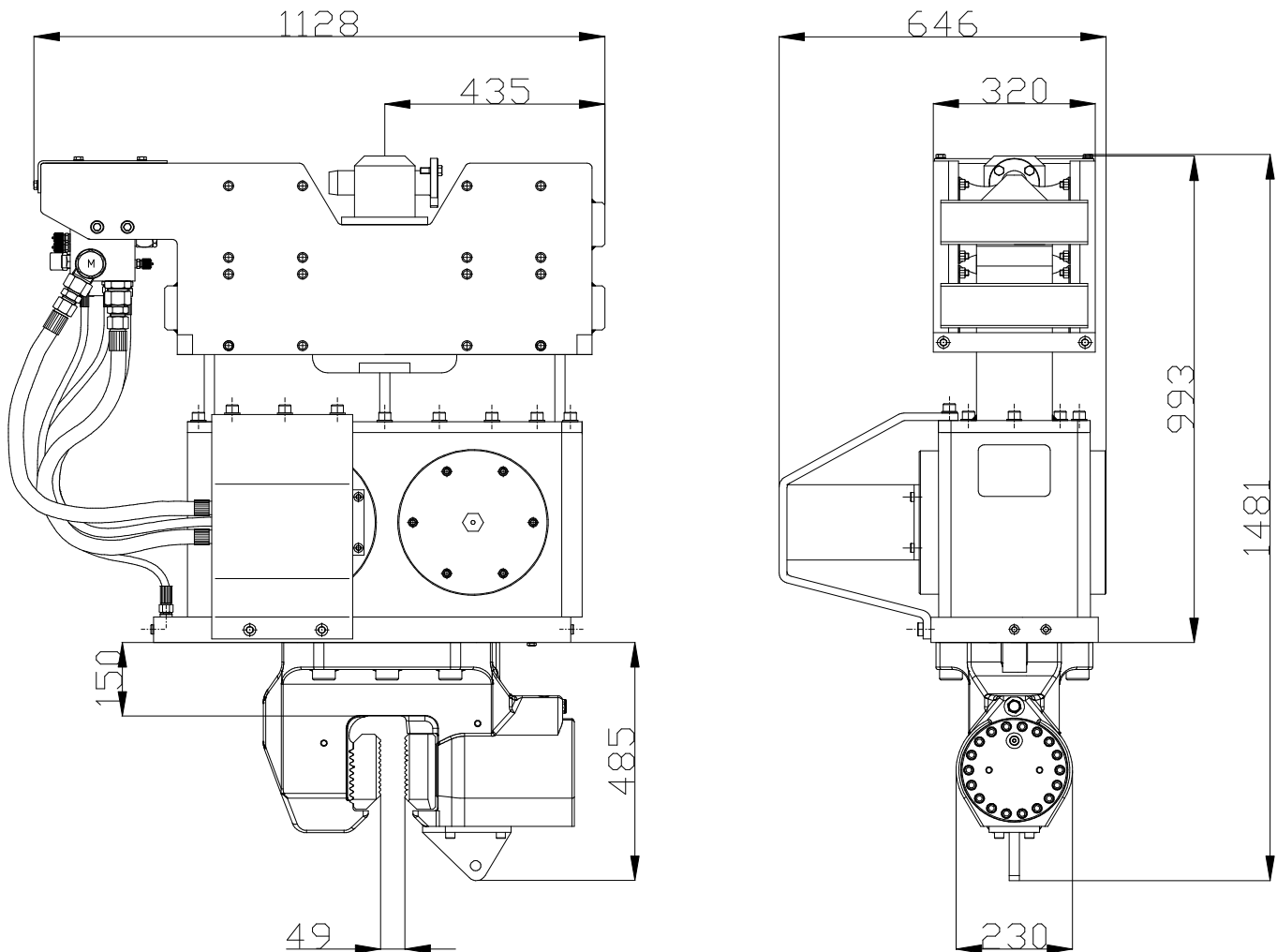
PVE 4A

Vibro Hammer



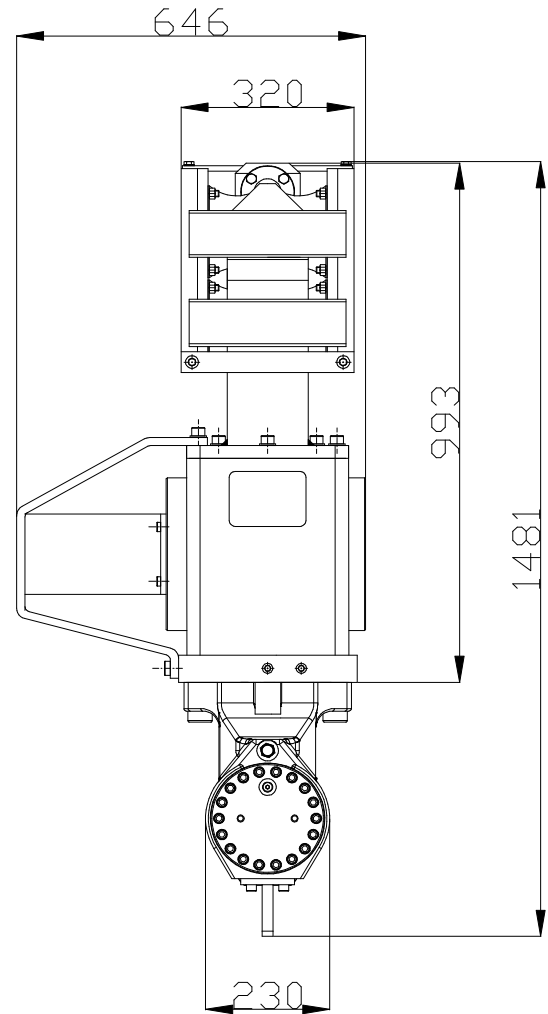
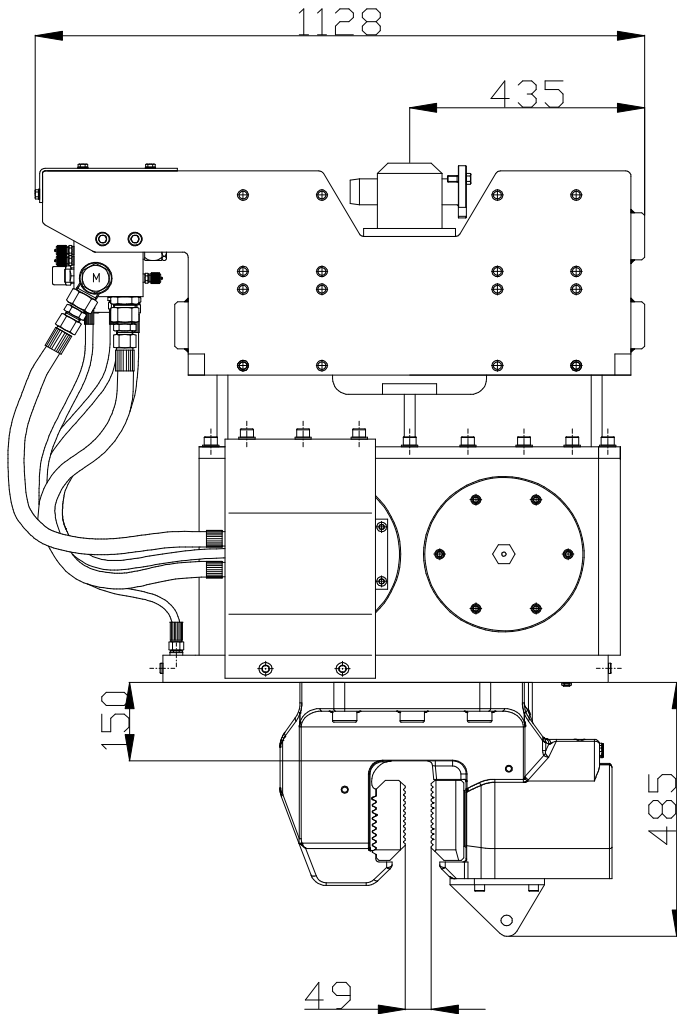
Le débit d'huile maximum sera différent dans le cas d'un manifold avec fonction de séquence. Contactez Dieseko Group pour plus d'informations.

Spécifications		PVE 4A	
Moment excentrique	4 kgm	Pinces:	
Max. force centrifuge	344 kN	Pince palplanche	60TU
Max. fréquence	2800 rpm	Poids de transport par pièce	250 kg
Max. amplitude sans 60TU	12,3 mm	Pince tube	N/A
Max. amplitude avec 60TU	8,9 mm	Poids de transport par pièce	N/A kg
Force de traction statique	120 kN		
Force maximale d'appui	100 kN		
Pression de travail max.	350 bar	Groupe hydraulique:	
Débit d'huile max.	168 l/min	Modèle	N/A
Puissance hydraulique max.	98/133 kW/ch		
Huile lubrifiante	no		
Poids dynamique sans 60TU	650 kg	Jeu de tuyau:	
Poids dynamique avec 60TU	900 kg	Longueur	N/A m
Poids total sans 60TU & tuyaux	1280 kg	Poids de transport (±)	N/A kg



Max. oliestroom wijzigt in geval van manifold met volgordefunctie. Neem contact op met Dieseko Group voor meer informatie.

Specificaties		PVE 4A	
Excentrisch moment	4 kgm	Klemmen:	
Max. centrifugaalkracht	344 kN	Damwandklem	60TU
Max. toerental	2800 rpm	Transportgewicht per klem	250 kg
Max. amplitude excl. 60TU	12,3 mm	Pijpenklem	N/A
Max. amplitude incl. 60TU	8,9 mm	Transportgewicht per klem	N/A kg
Max. statische trekkracht	120 kN		
Max. voorspanning	100 kN		
Max. werkdruk	350 bar	Aggregaat:	
Max. oliedoorstroming	168 l/min	Model	N/A
Max. hydraulisch vermogen	98/133 kW/PK		
Geforceerde smering	nee		
Dynamisch gewicht excl. 60TU	650 kg	Slangenset:	
Dynamisch gewicht incl. 60TU	900 kg	Lengte	N/A m
Totaalgewicht excl. 60TU & slangen	1280 kg	Transportgewicht (±)	N/A kg



El flujo de aceite máximo diferirá con un colector con función de secuencia. Póngase en contacto con Dieseko Group para obtener más información.

Especificaciones		PVE 4A	
Momento excéntrico	4 kgm	Abrazadera:	
Fuerza centrífuga máxima	344 kN	Hoja abrazadera pila	60TU
Frecuencia máxima	2800 rpm	Peso de transporte por pieza	250 kg
Amplitud máxima excluyendo 60TU	12,3 mm	Abrazadera de tubo	N/A
Amplitud máxima incluyendo 60TU	8,9 mm	Peso de transporte por pieza	N/A kg
Estático tracción máxima	120 kN		
Compresión máxima	100 kN		
Presión máxima de trabajo	350 bar	Unidad de potencia:	
Flujo de aceite máximo	168 l/min	Modelo	N/A
Máxima potencia hidráulica	98/133 kW/HP		
Lubricación forzada	no		
Peso dinámico excluyendo 60TU	650 kg	Conjunto de manguera:	
Peso dinámico incluyendo 60TU	900 kg	Longitud	N/A m
Peso total excluyendo 60TU & mangueras	1280 kg	Peso de transporte (±)	N/A kg



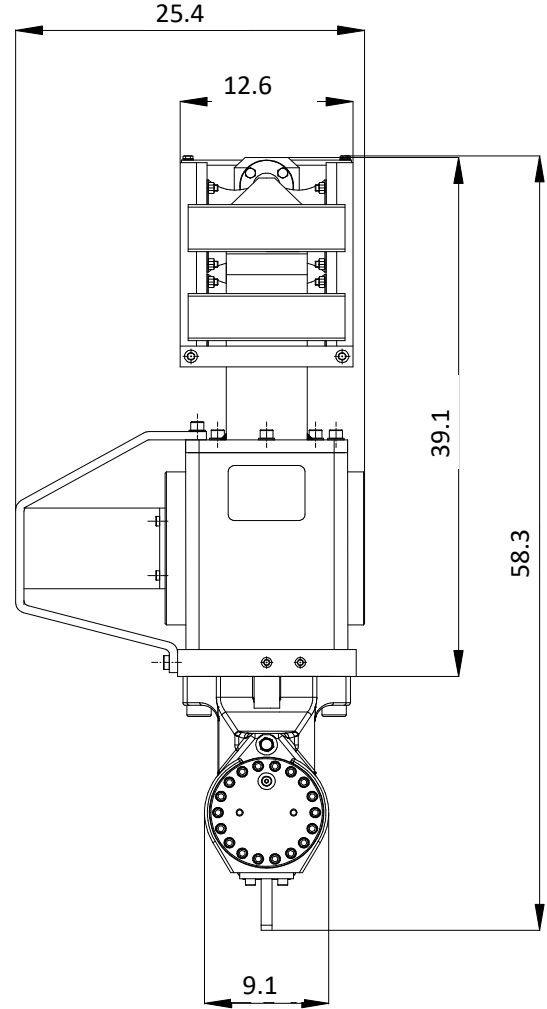
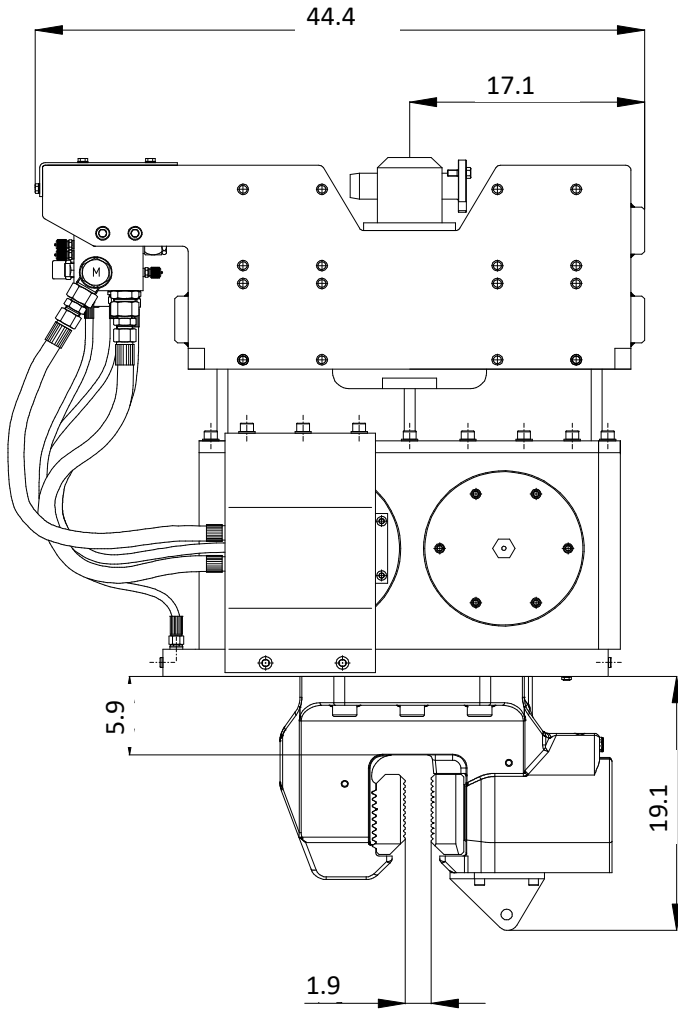
Specifications

PVE 4A

Vibro Hammer

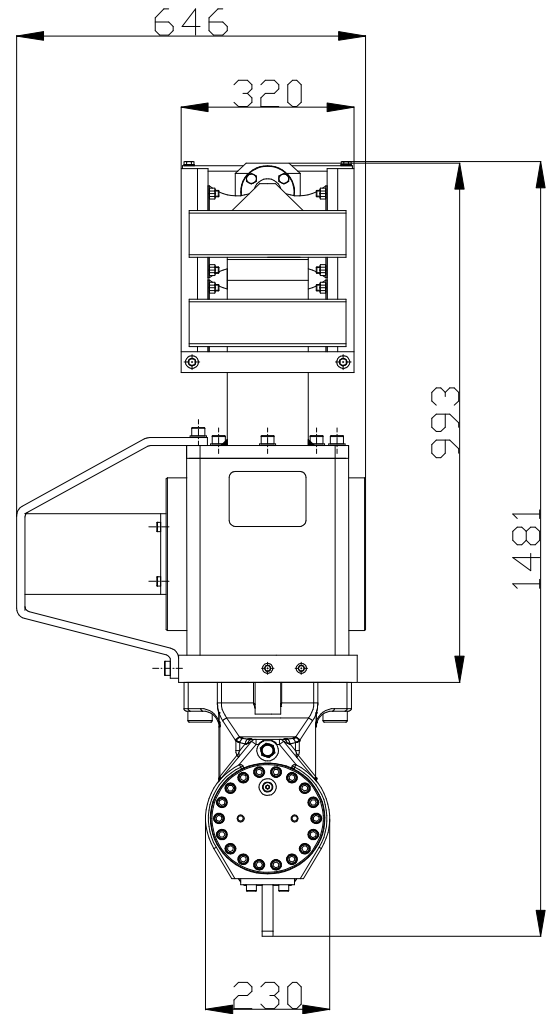
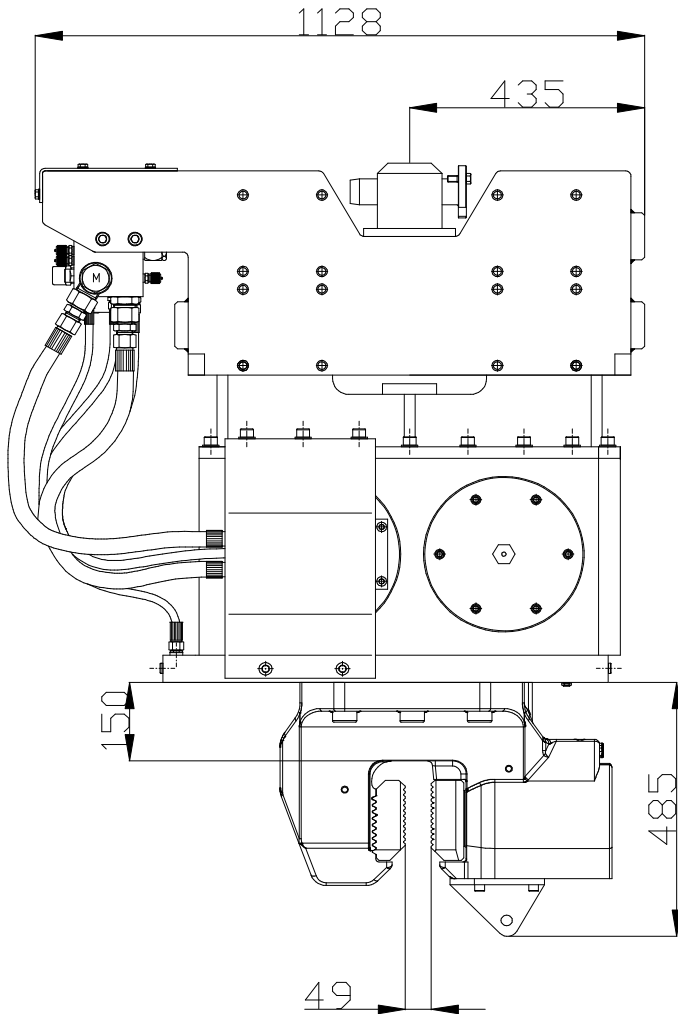
USA

Dimensions in inches



Max. oil flow will differ in case of a manifold with sequence function. Contact Dieseko Group for more information.

Specifications		PVE 4A	
Eccentric moment	347 in-lbs	Clamps:	
Centrifugal force	39 ton	Sheet pile clamp	60TU
Max. frequency	2,800 rpm	Transport weight per piece	551 lbs
Max. amplitude excluding 60TU	0.48 in	Double clamps	N/A
Max. amplitude including 60TU	0.35 in	Transport weight per piece	N/A lbs
Max. static line-pull	13 ton		
Max. pull-down	11 ton		
Max. operating pressure	5,076 psi	Powerpack:	
Max. oil flow	44 gal/min	Model	N/A
Max. hydraulic power	98/133 kW/HP		
Forced lubrication	no		
Dynamic weight excluding 60TU	1,433 lbs	Hose set:	
Dynamic weight including 60TU	1,984 lbs	Length	N/A ft
Total weight excluding 60TU & hoses	2,822 lbs	Transport weight (±)	N/A lbs



Debitul maxim de ulei va fi diferit în cazul unui colector cu funcție de secvență. Contactați Dieseko Group pentru mai multe informații.

Specificatii :		PVE 4A	
Moment excentric	4 kgm	menghira:	
Forta centrifuga maxima	344 kN	menghina pentru palplanse	60TU
Frecventa maxima	2800 rpm	Greutatea de transport pp.	250 kg
Amplitudine maxima exclusiva. 60TU	12,3 mm	menghina dubla	N/A
Amplitudine maxima inclusivă. 60TU	8,9 mm	Greutatea de transport pp.	N/A kg
Tractiune maxima statica	120 kN		
Trage în jos maxima	100 kN		
Presiune maxima de lucru	350 bar	generatoare:	
Debit maxim de ulei	168 l/min	Model	N/A
Puterea hidraulică maxima	98/133 kW/HP		
Lubrifiere fortata	nu		
Greutatea dinamica exclusiva. 60TU	650 kg	Tip de furtun:	
Greutatea dinamica inclusivă. 60TU	900 kg	Lungimea	N/A m
Greutatea totala fara. 60TU si furtun	1280 kg	Greutatea de transport (±)	N/A kg