

| Specifications : | | PVE 8VM | |
|---------------------------------|---------------|----------------------------|------------|
| Eccentric moment | 0-7,5 kgm | Clamps: | |
| Centrifugal force | 0-435 kN | Sheet pile clamp | 60TU |
| Max. frequency | 2300 rpm | Transport weight per piece | 250 kg |
| Max. amplitude excl. 60TU | 15,2 mm | Double clamps | 55TC |
| Max. amplitude incl. 60TU | 12,1 mm | Transport weight per piece | 310 kg |
| Max. static line-pull | 120 kN | | |
| Max. pull-down | 100 kN | | |
| Max. operating pressure | 350 bar | Powerpack: | |
| Max. oil flow | 185 l/min | Model | 200 series |
| Max. hydraulic power | 108/147 kW/HP | | |
| Forced lubrication | yes | | |
| Dynamic weight excl. 60TU | 985 kg | Hose set: | |
| Dynamic weight incl. 60TU | 1235 kg | Length | 30 m |
| Total weight excl. 60TU & hoses | 1515 kg | Transport weight (±) | 322 kg |

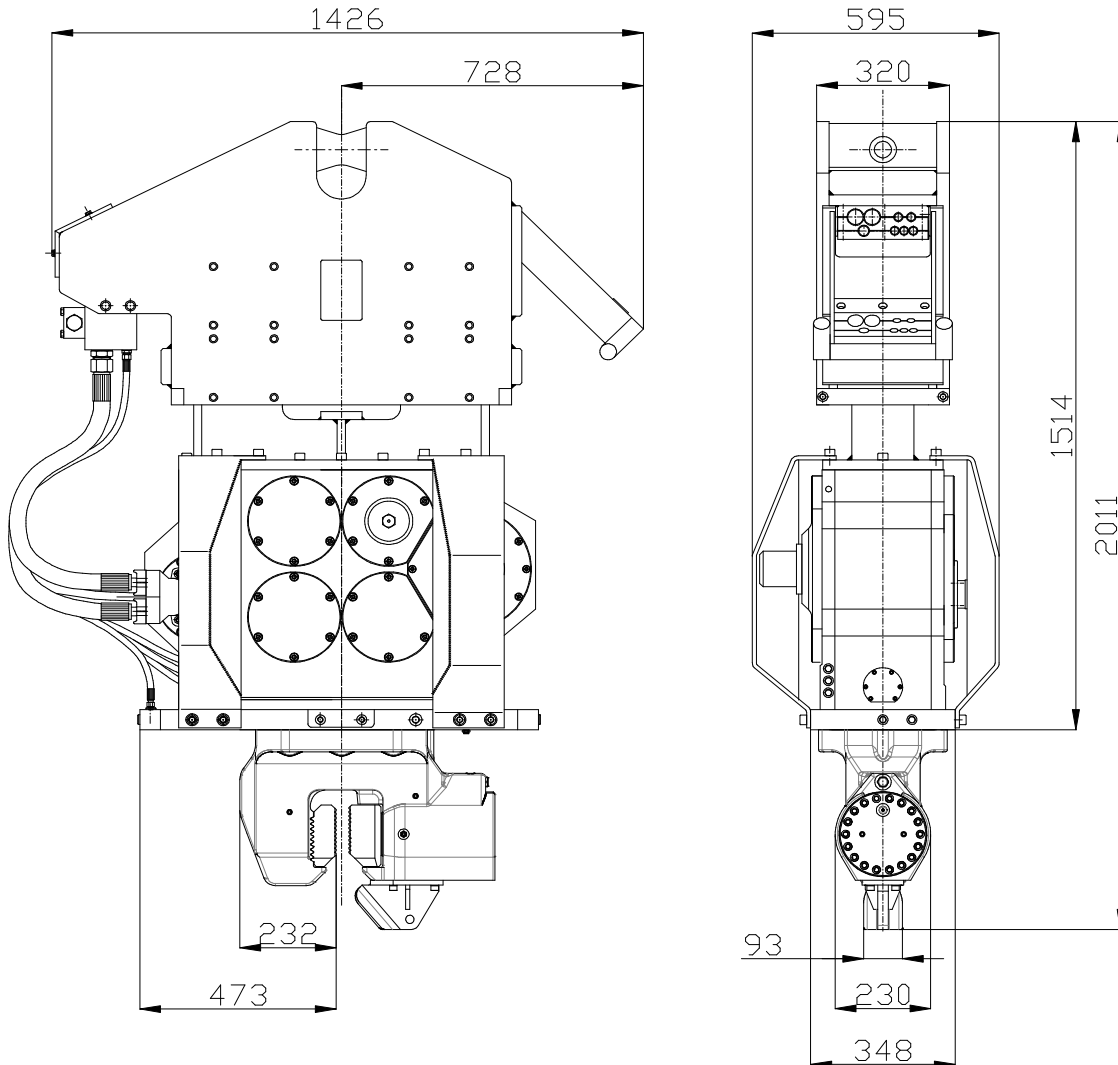


Technische Daten

PVE 8VM

Vibro Hammer

Deutsch



Technische Daten :

PVE 8VM

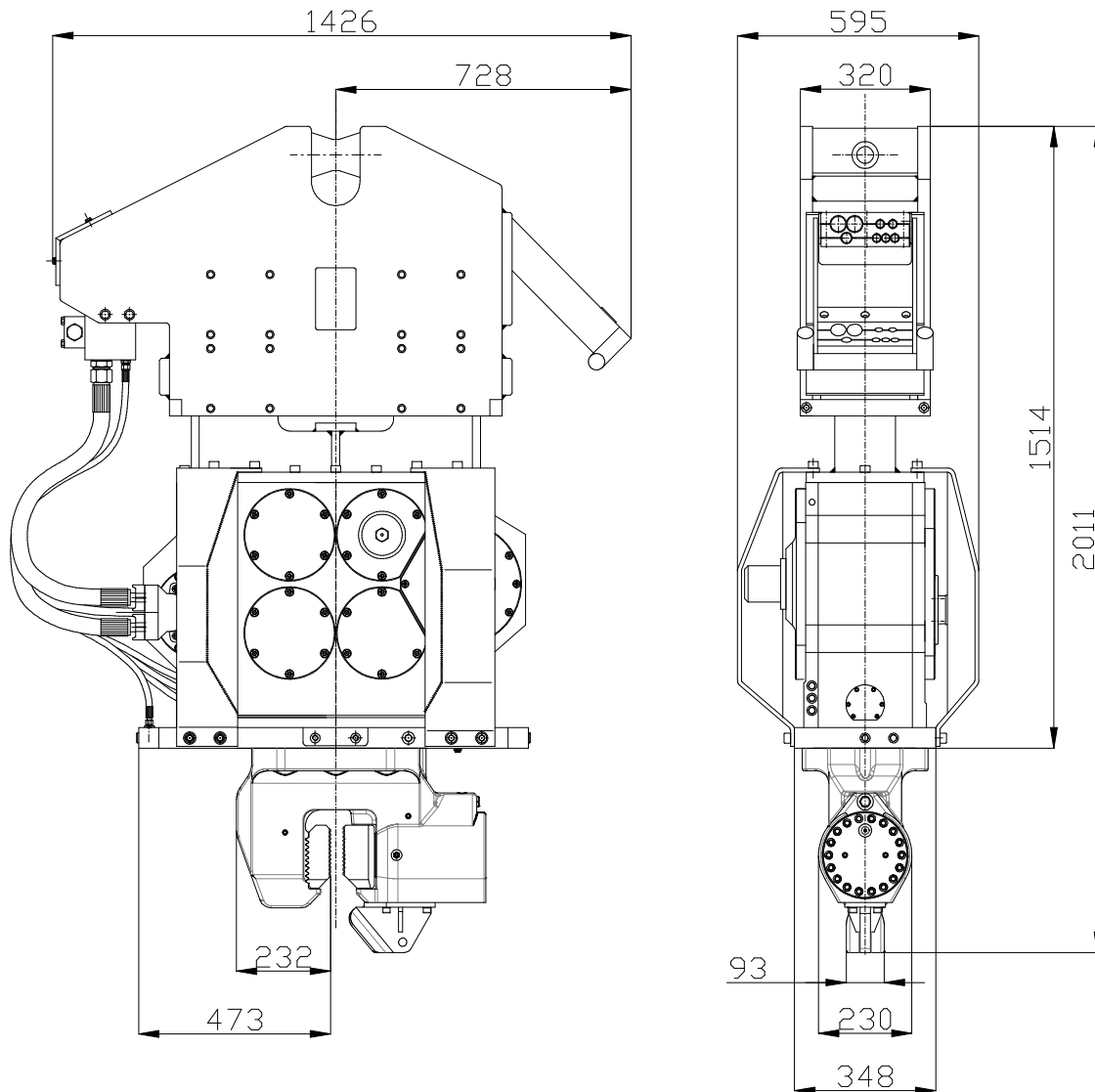
| | | | |
|----------------------------------|---------------|-------------------------|------------|
| Statisches Moment | 0-7,5 kgm | Klemmzange: | |
| Max. Fliehkraft | 0-435 kN | Universalzange | 60TU |
| Max. Drehzahl | 2300 rpm | Transportgew. pro Stück | 250 kg |
| Max. Amplitude ohne 60TU | 15,2 mm | Rohrklemmzange | 55TC |
| Max. Amplitude mit 60TU | 12,1 mm | Transportgew. pro Stück | 310 kg |
| Max. Statische Zugkraft | 120 kN | | |
| Max. Vorspannung | 100 kN | | |
| Max. Betriebsdruck | 350 bar | Aggregat: | |
| Max. Fördermenge | 185 l/min | Modell | 200 series |
| Max. hydraulische Leistung | 108/147 kW/PS | | |
| Zwangsschmierung | ja | | |
| Dyn. Gewicht ohne 60TU | 985 kg | Schlauchsatz: | |
| Dyn. Gewicht mit 60TU | 1235 kg | Länge | 30 m |
| Gesamtgew. ohne 60TU & Schläuche | 1515 kg | Transportgewicht (±) | 322 kg |



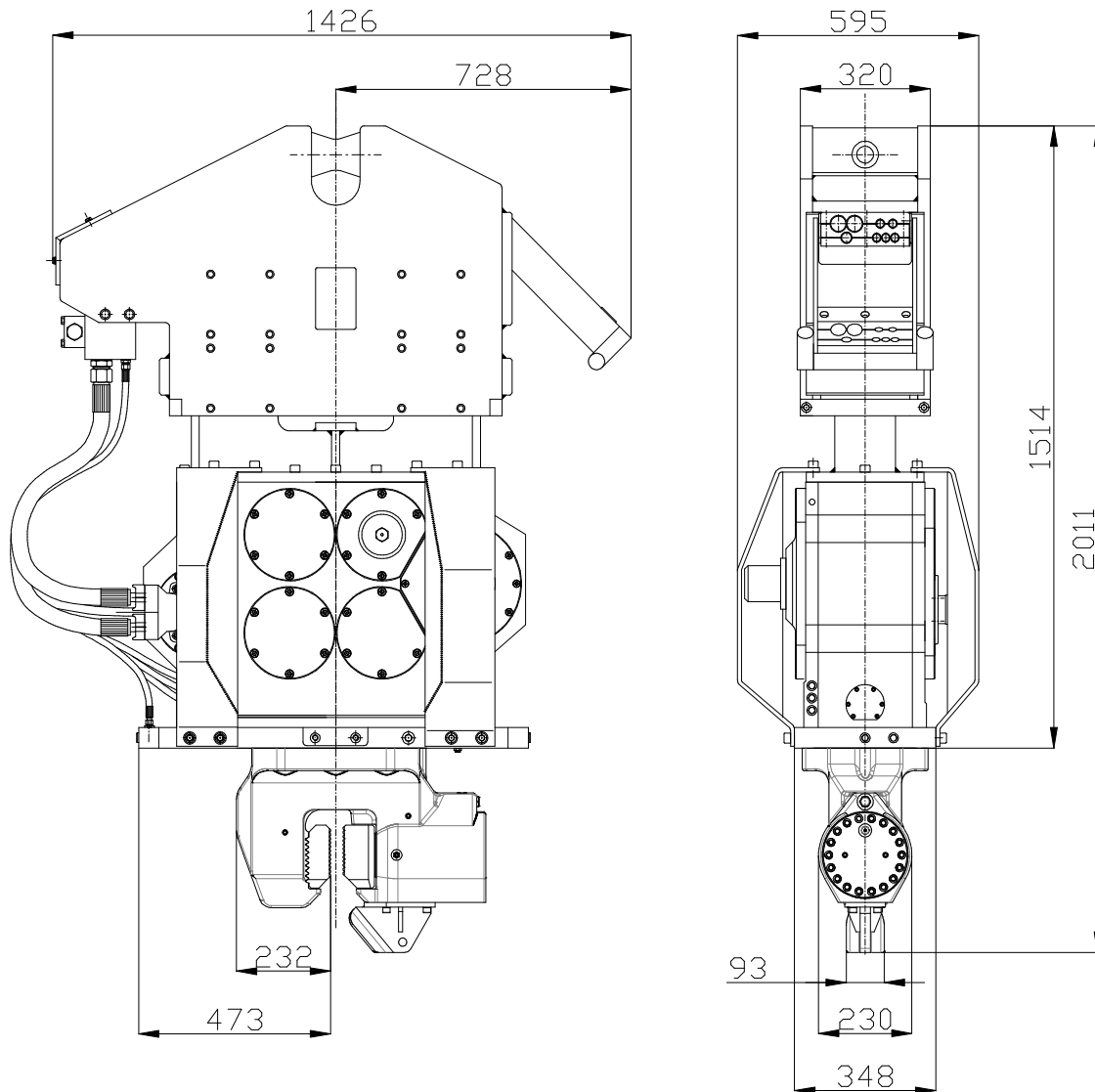
Spécifications

PVE 8VM

Vibro Hammer



| Spécifications | | PVE 8VM | |
|--------------------------------|---------------|------------------------------|------------|
| Moment excentrique | 0-7,5 kgm | Pinces: | |
| Max. force centrifuge | 0-435 kN | Pince palplanche | 60TU |
| Max. fréquence | 2300 rpm | Poids de transport par pièce | 250 kg |
| Max. amplitude sans 60TU | 15,2 mm | Pince tube | 55TC |
| Max. amplitude avec 60TU | 12,1 mm | Poids de transport par pièce | 310 kg |
| Force de traction statique | 120 kN | | |
| Force maximale d'appui | 100 kN | | |
| Pression de travail max. | 350 bar | Groupe hydraulique: | |
| Débit d'huile max. | 185 l/min | Modèle | 200 series |
| Puissance hydraulique max. | 108/147 kW/ch | | |
| Huile lubrifiante | oui | | |
| Poids dynamique sans 60TU | 985 kg | Jeu de tuyau: | |
| Poids dynamique avec 60TU | 1235 kg | Longueur | 30 m |
| Poids total sans 60TU & tuyaux | 1515 kg | Poids de transport (±) | 322 kg |



| Specificaties | | PVE 8VM | |
|------------------------------------|---------------|---------------------------|------------|
| Excentrisch moment | 0-7,5 kgm | Klemmen: | |
| Max. centrifugaalkracht | 0-435 kN | Damwandklem | 60TU |
| Max. toerental | 2300 rpm | Transportgewicht per klem | 250 kg |
| Max. amplitude excl. 60TU | 15,2 mm | Pijpenklem | 55TC |
| Max. amplitude incl. 60TU | 12,1 mm | Transportgewicht per klem | 310 kg |
| Max. statische trekkracht | 120 kN | | |
| Max. voorspanning | 100 kN | | |
| Max. werkdruk | 350 bar | Aggregaat: | |
| Max. oliedoorstroming | 185 l/min | Model | 200 series |
| Max. hydraulisch vermogen | 108/147 kW/PK | | |
| Geforceerde smering | ja | | |
| Dynamisch gewicht excl. 60TU | 985 kg | Slangenset: | |
| Dynamisch gewicht incl. 60TU | 1235 kg | Lengte | 30 m |
| Totaalgewicht excl. 60TU & slangen | 1515 kg | Transportgewicht (±) | 322 kg |

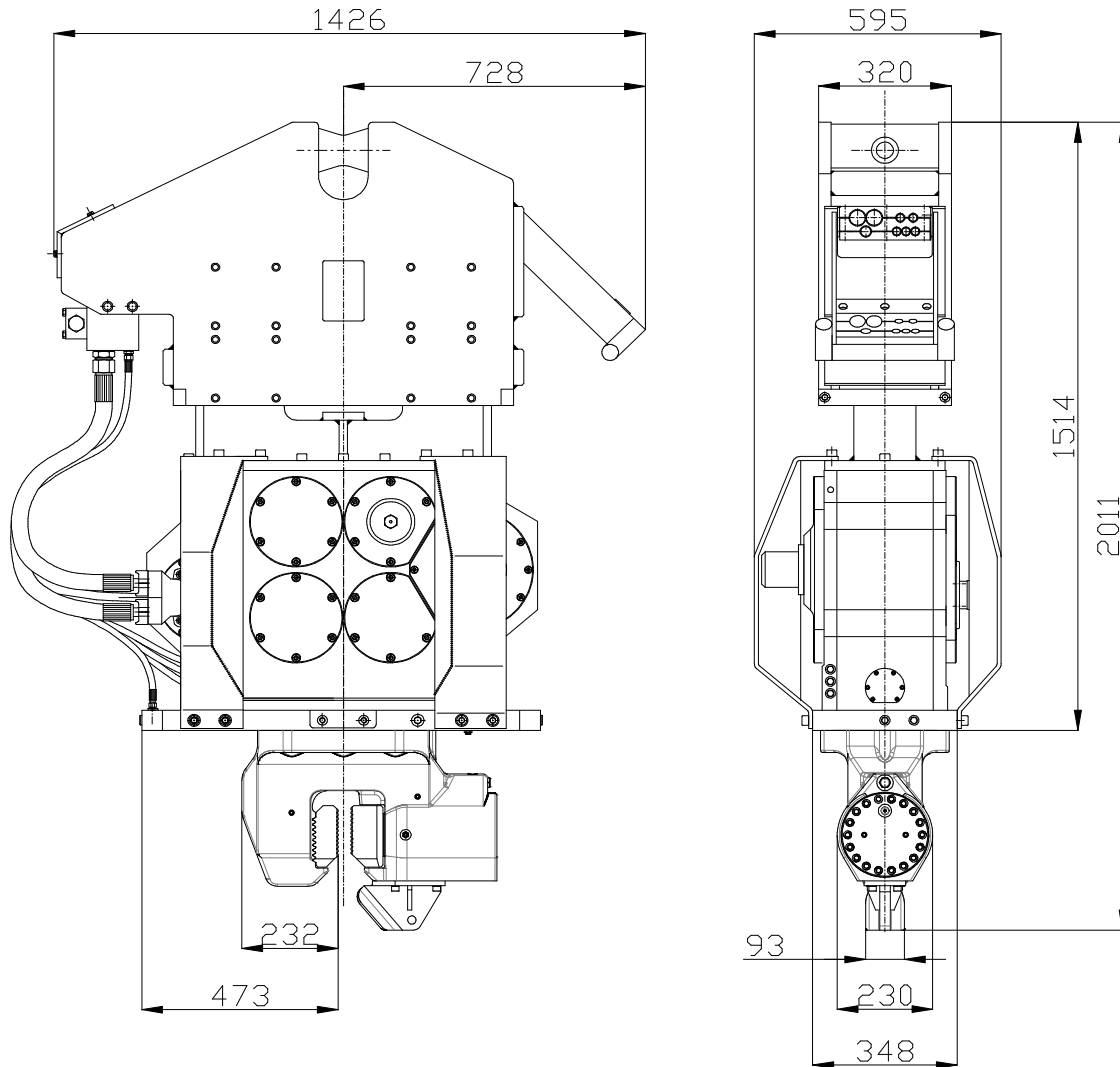


Especificaciones

PVE 8VM

Vibro Hammer

Español



| Especificaciones | | PVE 8VM | |
|--|---------------|------------------------------|------------|
| Momento excéntrico | 0-7,5 kgm | Abrazadera: | |
| Fuerza centrífuga máxima | 0-435 kN | Hoja abrazadera pila | 60TU |
| Frecuencia máxima | 2300 rpm | Peso de transporte por pieza | 250 kg |
| Amplitud máxima excluyendo 60TU | 15,2 mm | Abrazadera de tubo | 55TC |
| Amplitud máxima incluyendo 60TU | 12,1 mm | Peso de transporte por pieza | 310 kg |
| Estático tracción máxima | 120 kN | | |
| Compresión máxima | 100 kN | | |
| Presión máxima de trabajo | 350 bar | Unidad de potencia: | |
| Flujo de aceite máximo | 185 l/min | Modelo | 200 series |
| Máxima potencia hidráulica | 108/147 kW/HP | | |
| Lubricación forzada | si | | |
| Peso dinámico excluyendo 60TU | 985 kg | Conjunto de manguera: | |
| Peso dinámico incluyendo 60TU | 1235 kg | Longitud | 30 m |
| Peso total excluyendo 60TU & mangueras | 1515 kg | Peso de transporte (±) | 322 kg |

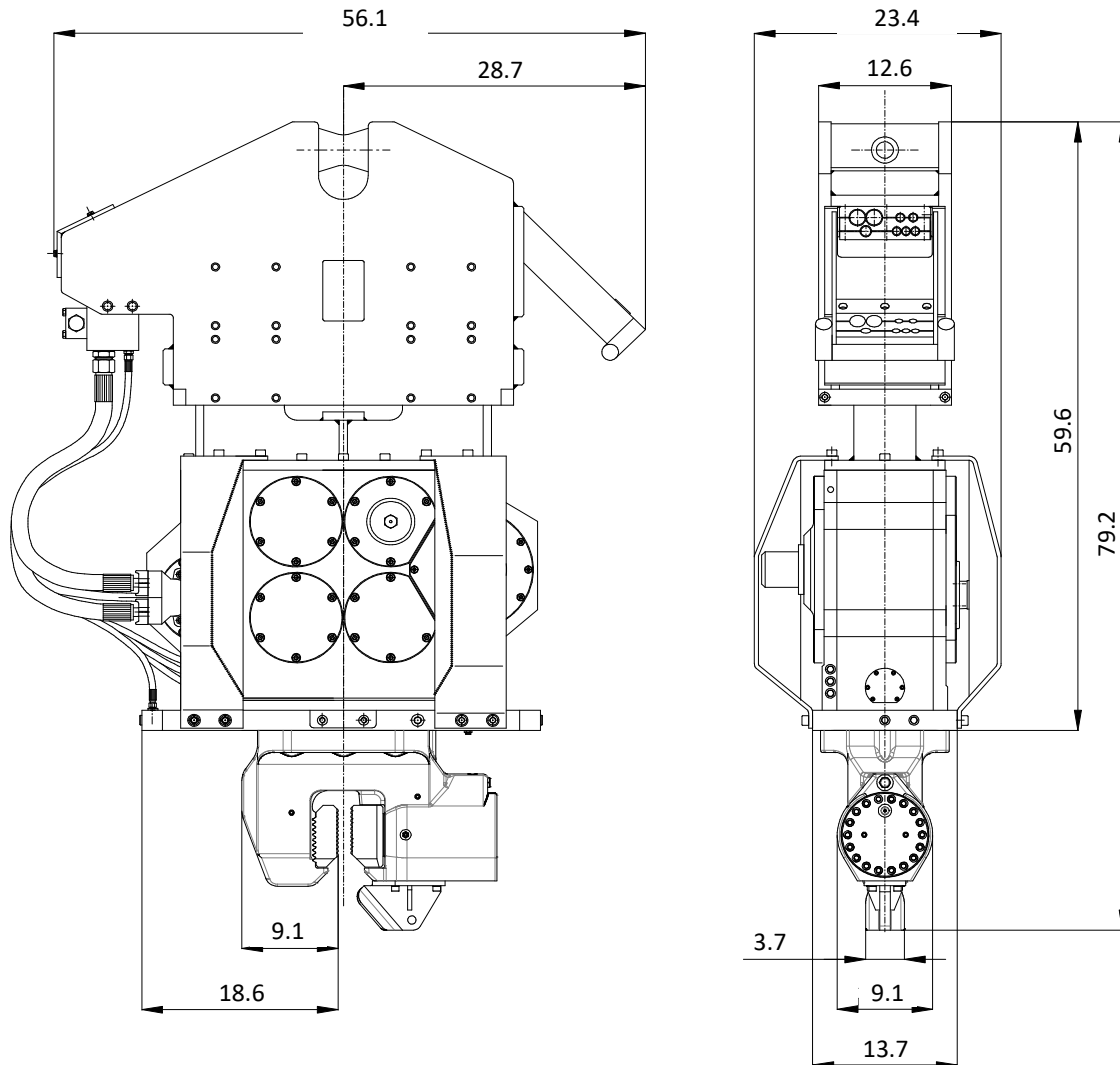
Specifications

PVE 8VM

Vibro Hammer

USA

Dimensions in inches



| Specifications | | PVE 8VM | |
|-------------------------------------|---------------|----------------------------|------------|
| Eccentric moment | 0-651 in-lbs | Clamps: | |
| Centrifugal force | 0-49 ton | Sheet pile clamp | 60TU |
| Max. frequency | 2,300 rpm | Transport weight per piece | 551 lbs |
| Max. amplitude excluding 60TU | 0.6 in | Double clamps | 55TC |
| Max. amplitude including 60TU | 0.48 in | Transport weight per piece | 310 lbs |
| Max. static line-pull | 13 ton | | |
| Max. pull-down | 11 ton | | |
| Max. operating pressure | 5,076 psi | Powerpack: | |
| Max. oil flow | 49 gal/min | Model | 200 series |
| Max. hydraulic power | 108/147 kW/HP | | |
| Forced lubrication | yes | | |
| Dynamic weight excluding 60TU | 2,172 lbs | Hose set: | |
| Dynamic weight including 60TU | 2,723 lbs | Length | 30 ft |
| Total weight excluding 60TU & hoses | 3,340 lbs | Transport weight (±) | 322 lbs |

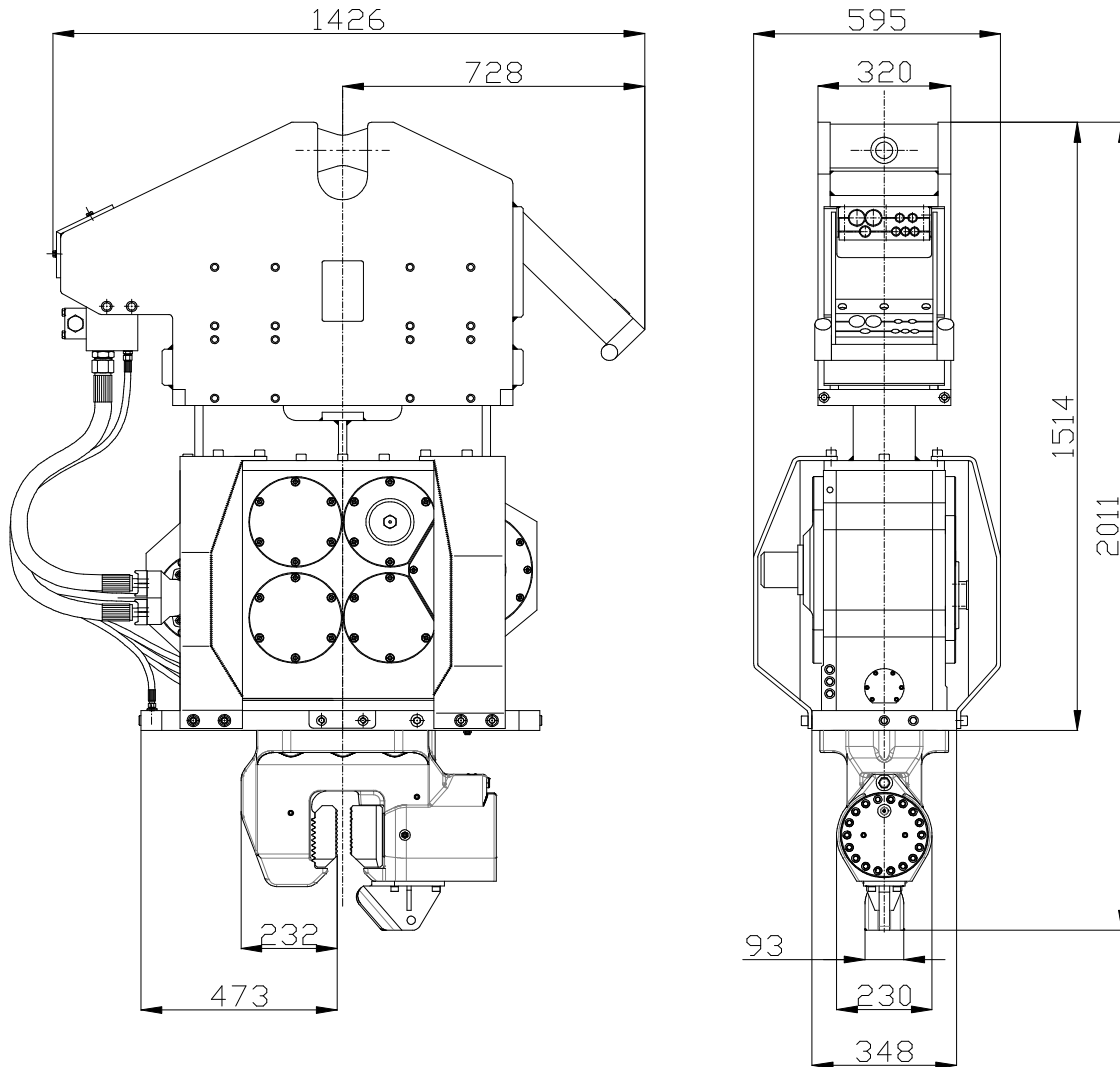


Specificatii

PVE 8VM

Ciocan cu vibratii

romănesc



Specificatii :

PVE 8VM

| | | | |
|---------------------------------------|---------------|----------------------------|------------|
| Moment excentric | 0-7,5 kgm | menghira: | |
| Forta centrifuga maxima | 0-435 kN | menghina pentru palplase | 60TU |
| Frecventa maxima | 2300 rpm | Greutatea de transport pp. | 250 kg |
| Amplitudine maxima exclusiva. 60TU | 15,2 mm | menghina dubla | 55TC |
| Amplitudine maxima inclusivă. 60TU | 12,1 mm | Greutatea de transport pp. | 310 kg |
| Tractie maxima statica | 120 kN | | |
| Trage în jos maxima | 100 kN | | |
| Presiune maxima de lucru | 350 bar | generatoare: | |
| Debit maxim de ulei | 185 l/min | Model | 200 series |
| Puterea hidraulică maxima | 108/147 kW/HP | | |
| Lubrifiere forzata | da | | |
| Greutatea dinamica exclusiva. 60TU | 985 kg | Tip de furtun: | |
| Greutatea dinamica inclusivă. 60TU | 1235 kg | Lungimea | 30 m |
| Greutatea totala fara. 60TU si furtun | 1515 kg | Greutatea de transport (±) | 322 kg |