



WOLTMAN 160 DR

WOLTMAN PILING & DRILLING RIGS

Rexroth hydraulics, **120 tons**
Pull-up, 51 meter leader
Piling configuration possible

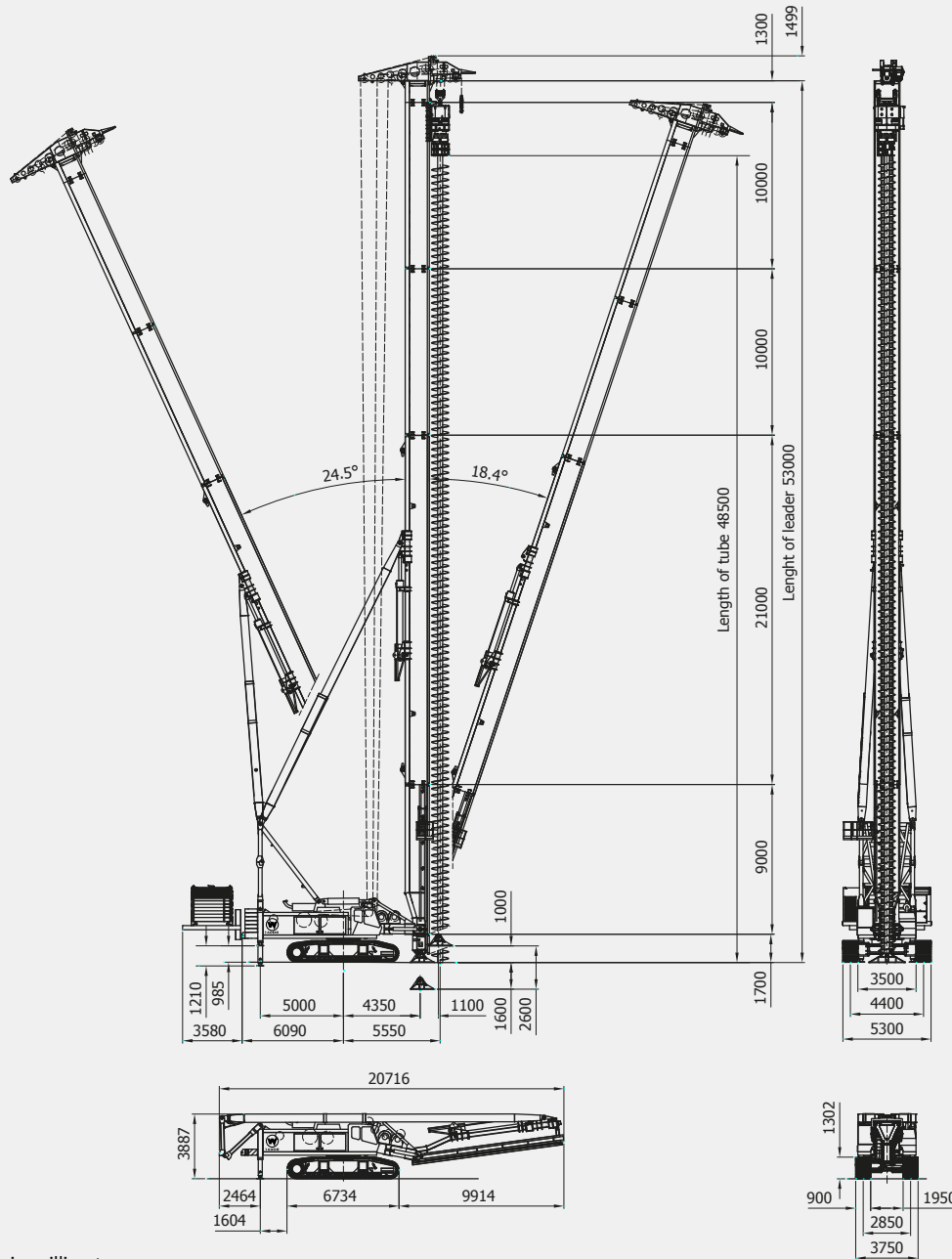
DIESEKO GROUP

 **WOLTMAN**
PILING & DRILLING RIGS

WOLTMAN 160 DR

Woltman is continuously improving their range of equipment. Developments in relation to emission standards and fuel efficiency might result in different specifications. No rights can be attached to the dimensions and specifications mentioned on this leaflet because they might have changed without further notification. All data is subject printing and conversion errors.

TECHNICAL SPECIFICATIONS



All dimensions are in millimeters

Operational specifications

Recommended Rotary head	PVE	RH-40/RH-45/RH-50		
Max. torque on leader	kNm	500	ton/m	56.2
Leader length std. (max.)	mtr	46 (51)	ft	150.9 (167.3)
Max. drill depth	mtr	42 (47)	ft	137.8 (154.2)
Max. diameter	mm	1.500	in	59
Pull up winch	ton	120 (15x8)	lbs	264,554
Pull down winch	ton	30 (15x2)	lbs	66,139
Aux. Winch 1	ton	10	lbs	22,046
Sheaving winch	ton	4	lbs	8,818
Operational weight RH-45	ton	185	lbs	407,855
Max. oil flow	ltr/min	390	g/min	103
Max. pressure	bar	320	psi	4,641

* subject to capacity charts

Weights

Transport weight	ton	110	lbs	242,508
Transport weight w/o counterweight	ton	85	lbs	187,393
Weight per track drive	ton	13	lbs	28,660
Total counterweight	ton	34,5	lbs	76,059

Rig specifications

Engine	Caterpillar C-9.3
Engine output	kW 258 HP 350
Hydraulics	Bosch Rexroth
Hydraulic system	Openloop